

Tri-Lakes Monument Radio Association

Just having fun
messing around with radio!



Newsletter January 2025

In this issue:

Topic	Page	Brief	Author
<i>From the Prez</i>	2	Thanks for your confidence!	Bob WØHTH
<i>Tech-Knowledgey</i>	4	WØTLM Repeater Coverage	Stu WØSTU
<i>Event Calendar</i>	6	Upcoming Fun & Events	
<i>Photo of the Month</i>	7	Who are these guys?	
<i>Operating Tips</i>	8	Good net practices	Steven KZØQ
<i>Guest Article</i>	10	Get a Vanity Call Sign	Bob KØNR
<i>Member Comments</i>	12	A word or two from our members.	
<i>Just For Fun</i>	13	WØTLM Word Search	
<i>Admin & Info</i>	15	Club info & resources; events	
<i>Classified Ads</i>	17	Member gear for sale	

A Word About the Newsletter

The Newsletter welcomes submissions of articles or other items of interest to WØTLM members. Contributions may be articles, commentary, photographs, notification of events, fun things, reports of interesting radio activities, and more!

It's YOUR newsletter. Let's hear from YOU!

Email Editor



From the Prez

Bob WØHTH



Thank You for Your Confidence!

New Year's Greetings to the club membership. Here we are in the New Year with newly elected officers and additions to the Leadership Team. I would like to take this opportunity to pass along my appreciation, along with Loren, KEØHZ (VP) and Barbara KØBE (Secy/Treas) for your confidence in electing us to lead the club. I also must pass along our appreciation to Tricia KØTRD for her leadership and foundational guidance that she has provided during her tenure as President. Fear not, she is still deeply involved in the club as a member of the Leadership Team. She will serve as the leader, coordinator, organizer, planner, central point of contact, and director of our support team for Community Events.

So here we are in 2025 with new leadership and some new impressions of what is happening to the club. Some of the changes that you may have seen since the elections in November are not instantaneous changes. These are ideas that have been under consideration for some time. We thought this would be a good time to start rolling out some of these initiatives and club updates to the membership.

Obviously first off, this newsletter will be using a new format and going to a monthly publication rather than weekly. This new format would not



Continued...

Tricia KØTRD, thank you for your service to WØTLM for the past three years! Well done!



Hot Announcements

- **Tech Day** at [Black Forest Fire & Rescue Station 1](#), January 11, 2025. VE exam session 9:00 am start time. Presentations 10:30 am start time.

Come and learn about connectors. Walk away with an Anderson Power Pole jumper and a coax jumper cable. Please RSVP planned attendance to accommodate ordering of supplies to Loren: ke0hz@arrl.net

- **January Monthly Meeting:** Mon, 20 Jan 06:00 PM - 09:00 PM. Doors open for Connect Time from 6:00 PM to 7:00 PM. Come meet other members, socialize, & have fun!
Zoom simulcast link for the meeting: <https://w0tlm.org/w0tlm-club-meeting> You will be placed in a waiting room until the host activates your entry to the meeting. Please display name & call sign.

From the Prez, continued

have been possible without the incomparable effort and creativity of all the contributors, but especially that of Stu, WØSTU and Melissa KFØPLU. The newsletter will be packed with new articles, some fun, and lots of information. Please consider contributing articles and even joining the staff. **We are looking for an assistant editor!** Email [me](#) or [Melissa KFØPLU](#) if interested.

As always, we will keep in mind that the primary mission of our club is education. We will be hosting a Tech Day, Jan.11, starting with a VE Testing session at 9:00 am and presentations beginning at 10:30 am. Check out more information under HOT ANNOUNCEMENTS!

We also have felt that the club's WØTLM Repeater is being underutilized. After all, we use the NØXLF repeater as primary for our weekly net, and WØTLM-R is a backup. We would like to see more use of this repeater by club members, so we decided to conduct a test on the repeater to ensure its viability. We had an excellent turn out December 16 for the testing of the WØTLM repeater located in Woodmoor at K4RA Tim's location. This was one of the largest number of operators ever on the net, with a total of 34 check-ins. The *Longest Distance Award* goes to KJØCFW Jon with over 27 miles from the repeater to his QTH in Fountain! Be sure to check out WØSTU Stu's article in the *Tech-Knowledgy* column for details of our findings on the repeater's coverage. Consider using this repeater as often as you can. It needs some exercise!

Don't forget January 25-26 is Winter Field Day. If you want to brave the cold and set up a station outdoors, make sure to be at the monthly club meeting on Monday, January 20. You just might find some fellow frosty hams to join you.

I am extremely fortunate to be surrounded by Leadership Team members who are excited for the upcoming year ahead. I sincerely hope that you will plan to participate and contribute to the continued success of YOUR CLUB. Just let us know of a place where you can offer up your talents. Your contributions will be greatly appreciated.

73

-- Bob WØHTH
President



Got feedback or suggestions for our WØTLM leadership?

Drop a note on our officers with your comments or recommendations for WØTLM.

It's YOUR club. Let's hear from YOU!

Email Leadership



Tech-Knowledgy

Stu WØSTU



WØTLM Repeater Coverage

As our glorious new leader, Bob WØHTH, recently pointed out on the WØTLM email list, our club does have its own repeater. And, as noted, it is egregiously under-utilized. The repeater has quite good local coverage over much of the higher populated region of north El Paso County, including the areas where the majority of our club membership resides. So, let's put our club repeater to use!

This is not to poo-poo the beloved NØXLF repeater. The NØXLF-R machine high atop the front range mountain just north of Palmer Lake has exceptional range. It can reach as far north as the Wyoming border and south into Pueblo, so it's owner/operators claim. But for most of our day-to-day contacts among club members and local area operators, we don't need to light up that much of the state. That's where the WØTLM-R machine comes in handy -- a cozier, local repeater with emphasis for our club membership and rag-chewing desires, and a backup repeater for our weekly Monday nets on NØXLF-R.

Just where, you might now ask, does the WØTLM repeater provide good coverage? I'm glad you asked. With the help of a many of you, Bob WØHTH and I have recently completed an assessment of our repeater's coverage. Using the combination of an online mapping estimation tool and real-world signal reports, we have produced a pretty solid database of WØTLM-R useful coverage.

I began by creating a coverage model using an online computational tool by Roger Coude VE2DBE, [Radio Mobile Online](#). The map model uses terrain and elevation data combined with transmitting station characteristics such as output power and antenna height, type, and gain. It plots a map of estimated radio coverage, as depicted on the next page. However, this is just a model, and all models are wrong. But, some are useful.

With a little spot validation of the estimated coverage area, this model is somewhat useful for depicting the signal coverage of the repeater station. Note, this is the repeater's down-link transmission coverage, but it does not represent the signal quality provided on uplink by distant using stations. That depends on the uplinking station's power, antenna height and gain, as well as local terrain challenges. So, if you're on the edge of the coverage area you may be able to receive the repeater's signals with your 5-watt HT, but not hold the repeater when attempting to transmit to it with that same HT. However, stronger and higher elevation stations can probably consider this mapping as a good, quite conservative estimate of two-way communications capability with WØTLM-R.

Continued...

WØTLM Repeater Coverage, continued

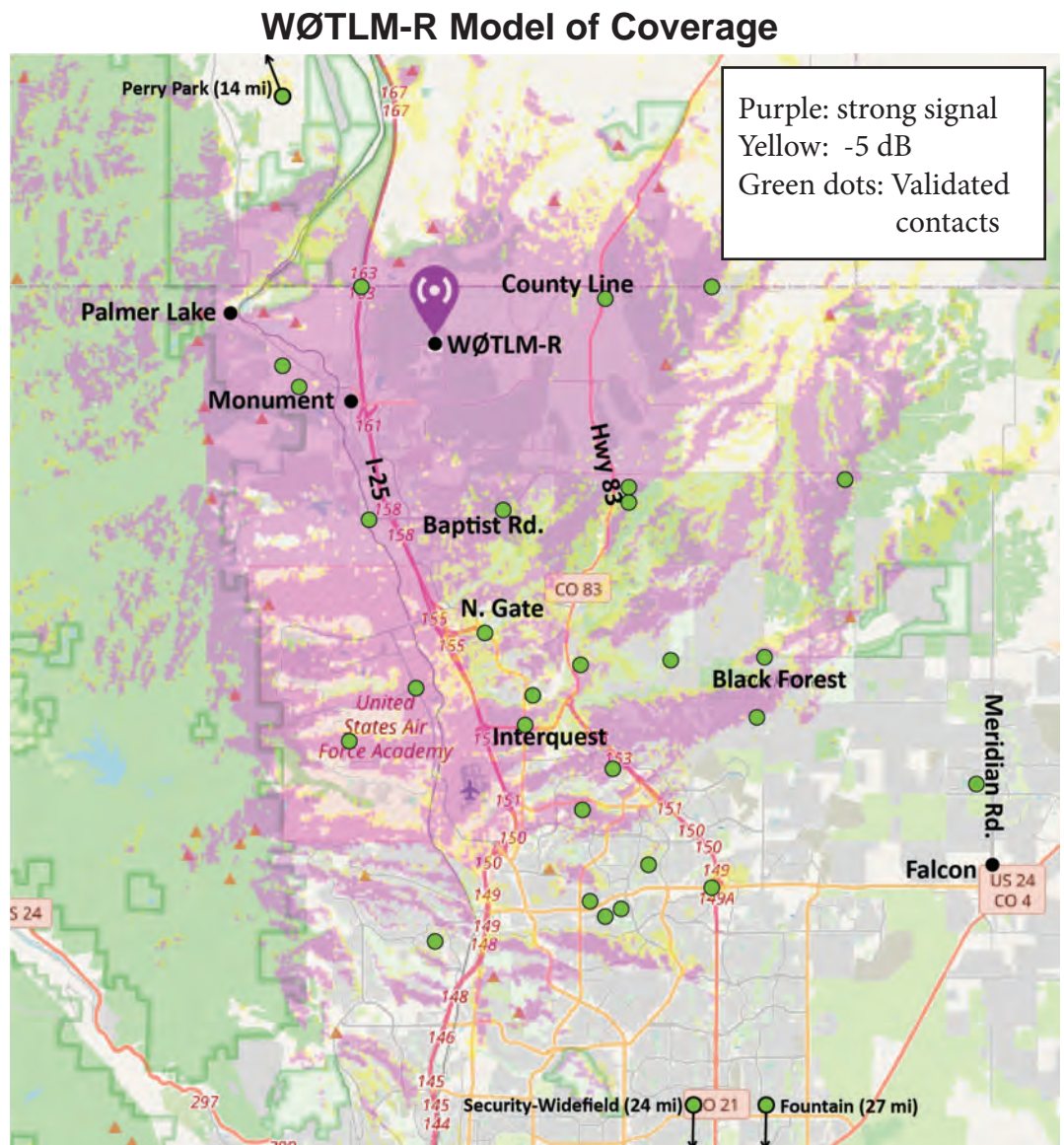
These assumptions and the model mapping near the repeater have been spot-tested using a mobile 20-watt station with a 5/8 wavelength antenna claiming 2.1 dBi gain. Further spot testing has been conducted in QSOs with other club members at distant locations, most particularly with more than 30 net participants on December 16, 2024. Spot validation points of some more distant two-way validations are depicted as green dots on the model map below. A couple of notes:

- The internal area defined by County Line Road (north), Highway 83 (east), Hodgen-Baptist Road (south), and Old Denver Highway (west) has solid, strong-signal coverage.
- The most distant two-way validations depicted are base stations at high power (>20 watts).
- Some two-way validations exceed the model prediction geography significantly, indicating that the model is a very conservative estimate, perhaps indicating viable two-way capability with low powered stations such as HTs. The model can also help to identify potential coverage gaps due to terrain variation in our region.

Overall, the WØTLM repeater clearly has excellent coverage over much of north El Paso County, well into north Colorado Springs, east into parts of Black Forest and Falcon, and even south of Colorado Springs in some of the higher terrain there, such as the Fountain and Security-Widefield area. Variable coverage has been validated north into Perry Park and parts of the Larkspur area.

Give the repeater a try, and add it to your monitoring scan. Let's make use of this excellent resource for our club. 73

-- Stu WØSTU



Event Calendar

Jan-Jun 2025



WØTLM Upcoming Events

January 2025

- Jan 11 Tech Day Black Forest Fire & Rescue Station 1
- Jan 11 VE Session Black Forest Fire & Rescue Station 1
- Jan 20 Monthly Meeting Tri-Lakes Chamber of Commerce Building
- Jan 25-26 Winter Field Day TBD

February 2025

- Feb 17 Monthly Meeting Tri-Lakes Chamber of Commerce Building

March 2025

- Mar 1 License Class Kickoff Woodmoor Barn
- Mar 17 Monthly Meeting Tri-Lakes Chamber of Commerce Building
- Mar 29 VE Session Monument Library

April 2025

- Apr 5 License Class GOTA Woodmoor Barn
- Apr 21 Monthly Meeting Woodmoor Barn

May 2025

- May 19 Monthly Meeting Tri-Lakes Chamber of Commerce Building
- May TBD Endurance Ride Greenland Open Space, Spruce Mt., ++

June 2025

- June 16 Monthly Meeting Tri-Lakes Chamber of Commerce Building
- June 28-28 ARRL Field Day TBD

Got an Event for the Newsletter?

If you have a recommendation for an event to include in our newsletter, let us know. We'll add it to next months listing.

It's YOUR newsletter. Let's hear from YOU!

Email Editor



Photo of the Month

Who are these guys?



1. Beavis & Butthead
2. Abbott & Costello
3. Kirk & Spock
4. Bert & Ernie
5. A loaded antenna & HT
6. A couple of luses
7. Stu WØSTU & Bob KØNR, Halloween 2013
8. All of the above

Got an interesting photo for the Newsletter?

If you have a fun, historical, or just interesting image to include in our newsletter, let us know. Technology, people, situations, gear, just about anything.

It's YOUR newsletter. Let's hear from YOU!

Email Editor



Operating Tips

Stephen KZØQ



Good Net Practices

Conducting a good on-air net takes a little planning and practice for the net control operator (NCO). But, it's just as important to use good practices when you are a net participant. The NCO and all other net station operators will really appreciate you using good amateur practice when you participating in a net. Let's consider some of these good amateur net practices that you can put to use in our next WØTLM net on Monday nights at 7:30 pm local.

- **Check in with the proper suffix group.** The NCO will usually take check-ins in alphabetic groups based upon call sign suffix -- the letters following the number in your call sign. In the WØTLM net script, we recommend the NCO take check-ins in suffix groups A-H, I-Q, and R-Z. For instance, since my call sign suffix starts with 'Q', I would check in with the I-Q group.
- **Check in using phonetics.** To help avoid errors necessitating repeated transmissions, check in by succinctly stating your call sign using standard ITU phonetics, repeat without phonetics, provide your first name and whether you have any formal traffic for the net. For example: "*Kilo Zulu Zero Quebec, KZØQ, no traffic*" or "*with traffic.*" Then, wait until you are recognized by the NCO to transmit again.
- **Let the repeater drop completely.** Most repeaters have a timeout that is a maximum duration that it will retransmit for a single continuous uplink transmission. A common duration for timeout is 3 minutes. If you transmit solid for more than this time, the repeater will automatically drop out, or stop retransmitting until the timer is reset by a complete pause in its retransmissions. Avoid timeouts during long transmissions by periodically pausing your uplink transmission to allow the repeater to completely stop retransmitting. A good practice is to say something like, "*Pause for reset*" to let listening stations know that your transmission will continue momentarily.
- **Break in using just your call sign.** If you want to inject a comment during the course of the net, first request recognition by the NCO by transmitting only your call sign during a break in transmissions. Usually this will be without phonetics to be succinct. Following the transmission of your call sign, wait for recognition by the NCO to transmit further.
- **Provide sufficient audio.** Help the NCO and all participants by speaking "loud and clear" into your microphone. Too often net participants speak quietly and have soft audio that is difficult to hear. Don't be shy, speak right up, but not to the point of

continued...

Good Net Practices, continued

overdriving or distorting your signal. Become familiar with your own signal quality by asking other operators before the net about your signal and audio. Adjust your voice tone and distance to the microphone to provide strong, good quality audio. And don't be offended by feedback provided by the NCO. The NCO may ask you to speak louder or softer, to help adjust your received audio to a comfortable level through the repeater.

- **Properly identify at the end of transmissions.** Following any set of transmissions on the net, such as answering the WØTLM net question or providing formal message traffic, be sure to properly identify with your call sign. Usually, phonetics are not needed for a simple closing ID like this. Further, if you are serving as net control, be sure to adhere to the 10-minute station ID requirement by periodically identifying the net and your station call sign. For instance, "KZØQ, net control for the Tri-Lakes net."
- **Maintain polite operating standards.** The net is not a place to hash out differences or air your grievances. Typically, many operators are listening. The net is the time to exercise your very best on-air operations, setting a good example for the rest of the community. Be polite and maintain good amateur practice. As former *FCC Special Counsel for the Spectrum Enforcement Division*, Riley Hollingsworth said, "Operate so that if a neighbor, niece or nephew, or news reporter hears you, that person will be impressed with amateur radio."
- **Adhere to all the common FCC regulations:**
 - Avoid the use of foul language.
 - Avoid even accidental transmission of music or commercial broadcasts.
 - Of course, never purposefully interfere with other's transmissions.

These are just a few tips to help you with proper net procedures. Try to exercise these practices next time you are on the WØTLM net or any other formal on-air net. These common procedures will become second nature to you in no time.

Catch you on the net. 73

-- Stephen KZØQ

Related resource: [Tactical Nets](#)
Ham Radio School article on more formal tactical net procedures.

Want to provide some operating tips for the Newsletter readers?

If you have some good operating tips for any type of operating, share them with your clubmates here! We can all learn from one another.

It's YOUR newsletter. Let's hear from YOU!

Email Editor



Guest Article

Bob KØNR



Get a Vanity Call Sign!

Article Courtesy of [Ham Radio School](#)

A common question I hear from new hams is “how do I get a vanity call sign?” The process is probably harder than it needs to be but certainly something any ham can do. In this article, I’ll keep things as simple as possible, focusing on what a new ham must do to get a vanity call. As part of the new FCC license application fees, there is now a \$35 charge for an amateur vanity application. (It used to be free.)

The basic steps to getting your special call sign are:

1. Choose one or more call signs that you’d like.
2. Find your FCC Registration Number (FRN)
3. Log onto the FCC Universal Licensing System (ULS)
4. Apply using “Request Vanity Call Sign”
5. Pay the FCC license application fee

To go deeper on this topic [take a look at the ARRL page](#), which describes the vanity call sign program in greater detail.

1. Choose A Call Sign:

The first step is probably the most fun, choosing what call sign you’d like to have. I chose my call sign KØNR because of its short length and the traditional KØ prefix. My buddy Stu chose the call sign WØSTU to match his name. Steve WGØAT chose his call sign to reflect his passion for hiking with pack goats. Many people choose a call sign with their initials in it. You certainly may have other ideas on what constitutes the right call sign for you.

Tech and General class licensees are allowed to choose either a 1×3 call sign (beginning with prefix N, K or W), or a 2×3 call sign (beginning with prefix letter K or W), referred to by the FCC as call sign Groups C and D. Of course, you must choose a call sign that is not assigned, which you can check by doing a search on the [FCC ULS web site](#). RadioQTH has a [useful tool for searching](#) for available call signs.

You should probably choose a few call signs that you’d be happy with and submit them in order of preference (see #4 below). Your first choice may not be available for a number of reasons, such as someone else may have just applied for it.

Continued...

2. Find Your FCC Registration Number: If you have an FCC radio license, you have an FRN. It was probably assigned to you when your license was first issued. Think of this as your user name for the ULS web site. To find your FRN, [search for your call sign on the ULS page.](#)

3. Log onto the FCC ULS: Next you need to [log into the ULS](#), which will probably be the most difficult part of the process — select the Online Filing login option. You'll need your FRN and your password for the site. Hopefully, you just found your FRN but you may not have a password assigned yet. If not, you'll need to follow the For-got Your Password? instructions on [this page](#) and get assistance.

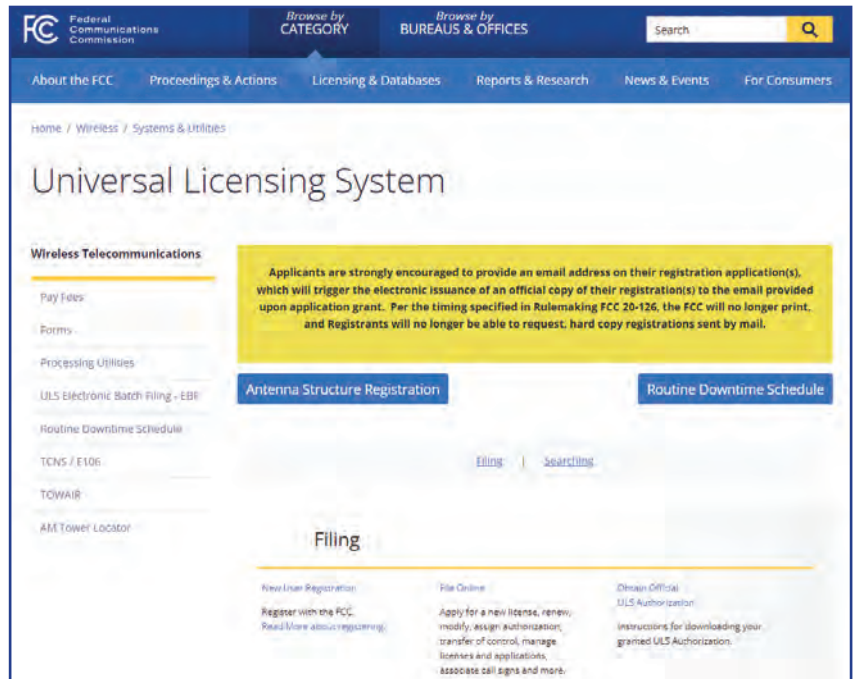


Figure: The FCC ULS website allows you to search for a call sign of interest and see if it is currently assigned.

4. Request a Vanity Call Sign:

Once you log into ULS, it should show you a list of licenses assigned to your FRN. You probably only have one, so click on that one to open the License Manager page. You should see a blue menu box near the right edge of the page, titled Work on This License. This menu box includes a Request Vanity Call Sign selection. Continue past the 'Applicant Questions' page (answer 'no' to each) to the 'Select Eligibility' page. Select your category, most commonly Primary station preference list unless you are requesting a vanity call formerly held by you or a close relative. Continue to the next page to provide a list, in order of preference, of vanity call signs you would prefer to be assigned. Continue through the remaining self-explanatory steps of the application process after you have entered your set of preferred call signs.

5. Pay the FCC Application Fee

Follow the FCC instructions on how to pay the \$35 application fee.

This should get your application into the FCC for your call sign. It will probably take a few weeks to get action from the FCC, so be patient. Good luck with your new call! 73

-- Bob KØNR

Want to write a piece for the Newsletter?

Share your knowledge or your story with your clubmates!
Write a guest article for the Newsletter.

It's YOUR newsletter. Let's hear from YOU!

Email Editor



Member Comments



As my term as president comes to a close, I want to take a moment to express my deepest gratitude to all of you. It has been an incredible honor and privilege to serve as your president over the past three years. Together, we have accomplished so much, from returning to in-person events such as Tech Day to fostering a sense of community and collaboration that will continue to thrive long after my term.

I am immensely proud of the work we have done and the progress we've made. This club is only as strong as its members, and I have been fortunate to work alongside such a dedicated and passionate group of individuals. Your support, volunteerism, and commitment have been the driving force behind our success, and I am confident that the future of WOTLM is in great hands.

As I pass the torch to Bob / WØHTH, I look forward to seeing all of the exciting initiatives and growth that will continue under his leadership. Please know that my commitment to the club remains strong, and I am remaining an active member of the leadership team with my new role as the Community Events Director.

Thank you once again for allowing me to lead this incredible group. I will cherish the memories we've made and am excited to see where you all take WOTLM in the coming year.

Wishing you all the best and continued success. 73

-- Tricia KØTRD

KØTRD

Thank you WOTLM club, its leadership, past and present, and volunteers that made what could be an unapproachable hobby very engaging, fun and doable! So bummed out I'm going to miss Tech Day, I hope you all attend AND send pics and comments for publication in the Newsletter!

-- Melissa KFØPLU, Editor

KFØPLU

I'm very pleased to help kickoff the new format and content of our WØTLM Newsletter. This is YOUR newsletter, and I encourage you to contribute to its content with your ideas, writing, photos, comments, and more. The more we all pitch-in, the better our Newsletter will become. Thanks in advance for being a part of it.

-- Stu WØSTU

WØSTU

Got a comment for the Newsletter?

Share your thoughts with your clubmates about anything club, radio, or technology related! Drop your comments on the Newsletter.

It's YOUR newsletter. Let's hear from YOU!

Email Editor



Just for Fun

WØTLM Ham Radio

Word Search



NRQBTTWIRWGE LURYNVCETWAQQMYIWV
 ELSSSCVITOWERDSPHHSWRMNJUJRQZR
 BXTAMRBRVRRROTWNRCFAQKZTJIVASET
 KHTDTOTVJEGVRGDOPRCSQZEAMSDKUR
 ATQRXENHYUECOSHPBBIAVANITYIYEI
 DOMAAAALUZBH LAETAMIVNGMNRXOOEEL
 EIQTBMWLMQYCNLMGOSEUQRAXPUQRNA
 OWQZSTPSIETJBKLABLWQCGVQXHZWUK
 OIZOUHIMTTNHSQBTVXUUFRQSLFIGCE
 CIMPEDANCEETXIYITSYIONOSPHERES
 SIGNALQKIJEPLYHPOQGZESUBBCWPFET
 UZILYMINTERFERENCENQFADBAYLCG
 LCVNQOSNASOHKICWLTWFYQNIWVFMIW
 KKQJGDVAMPERAGEBNLTQDMDPVEJHXT
 SRVTTUARFJJMXKWCLRTEAVKOTLIHOJ
 DUVALLNMKYKNVBCLBGHBCMWLVEIVHK
 EXNEUAUJPHMXNNUDHOPLQHVEENOVMF
 QXUSHTGAA LZDZBRIFNMMOFNMPGYQOE
 ZVFRPIORMMIVHNRSUPIERYIXTTPDX
 ROBYROQVKPAFHCEQZGLCQELACHIYXN
 ZLPETNTYTALTINAJUERSQTMGIRJFG
 JTFRSQXSTCJIEETCFJAOOUGKOIARVY
 QACVEDDJD COTTURWSPYPEECJEBWNTU
 LGRTHPOSCSVAUURPSGCHGNPKPIYMP
 IEYBCAEWJNOSXYDNSOWOKCADPSSLUL
 CAENDSBANGQKUIBETLYNPYUSRSMMEI
 ETNLVFSLTLHIVFAIQLGEXRXXWANON
 NKMHXIJMUEIPCXNLOGENERALVYSHCK
 SORAAALSHGERNBRESISTANCEGUODYQS
 EMACHMFVHOJLKRVNPEAGWKECVSVVUS

- | | | | | |
|-----------|--------------|-------------|------------|------------|
| AMATEUR | CURRENT | IONOSPHERE | RADIO | TOWER |
| AMPERAGE | CW | LICENSE | REPEATER | TRILAKES |
| AMPLIFIER | DIPOLE | MICROPHONE | RESISTANCE | UHF |
| AMPLITUDE | DOWNLINK | MOBILE | SATELLITE | UPLINK |
| ANTENNA | EXTRA | MODULATION | SIGNAL | VANITY |
| BNC | FREQUENCY | MONUMENT | SKIP | VHF |
| CALL | GENERAL | NVIS | SMA | VOLTAGE |
| COAXIAL | HAM | PROPAGATION | SUNSPOTS | WAVELENGTH |
| CQ | IMPEDANCE | QSL | SWR | YAGI |
| CTCSS | INTERFERENCE | QTH | TECHNICIAN | |

Just for Fun

WØTLM Ham Radio

Word Search Solution



- | | | | | |
|-----------|--------------|-------------|------------|------------|
| AMATEUR | CURRENT | IONOSPHERE | RADIO | TOWER |
| AMPERAGE | CW | LICENSE | REPEATER | TRILAKES |
| AMPLIFIER | DIPOLE | MICROPHONE | RESISTANCE | UHF |
| AMPLITUDE | DOWNLINK | MOBILE | SATELLITE | UPLINK |
| ANTENNA | EXTRA | MODULATION | SIGNAL | VANITY |
| BNC | FREQUENCY | MONUMENT | SKIP | VHF |
| CALL | GENERAL | NVIS | SMA | VOLTAGE |
| COAXIAL | HAM | PROPAGATION | SUNSPOTS | WAVELENGTH |
| CQ | IMPEDANCE | QSL | SWR | YAGI |
| CTCSS | INTERFERENCE | QTH | TECHNICIAN | |

Admin & Info

WØTLM Officers & Appointees, Etc.



President: Bob Fenkel WØHTH
Vice President: Loren Andersen KEØHZ
Secretary/Treasurer: Barb Evans KØBE

bobthebearguy@gmail.com
landerso2000@gmail.com
k0be.bje@gmail.com

Leadership Committee:

- Bob Fenkel WØHTH
- Loren Andersen KEØHZ
- Barb Evans KØBE
- Larry Kral NØAMP
- Hans Post-Uiterweer KFØLAX
- Stu Turner WØSTU
- Stephen Moraco KZØQ
- Tricia Olson

bobthebearguy@gmail.com
landerso2000@gmail.com
k0be.bje@gmail.com
lokral@att.net
pjgpost@gmail.com
stu.turner@comcast.net
stephen@moraco.us
tricia4wd@gmail.com

Education Program Cmte: [Larry NØAMP](#) & [Hans KFØLAX](#)
License Class Directors: [Stu Turner WØSTU](#) & [Bob Witte KØNR](#)
Newsletter Editor: [Melissa KFØPLU](#) - *We need someone!* [Get info.](#)
Community Events Director: [Tricia Olson KØTRD](#)

Repeaters:

WØTLM-R

447.725 MHz
 -5.0 MHz offset
 100.0 Hz CTCSS

NØXLF-R

147.075 MHz
 +0.6 MHz offset
 131.8 Hz CTCSS

Colorado Connection KBØVJJ

145.130 MHz
 -0.6 MHz offset
 88.5 CTCSS

Take Your License Exam!

Next WØTLM Volunteer Examiner Sessions:

January 11, 2025 9:00 am
 Black Forest Fire & Rescue Station 1

March 29, 2025 10:30 am
 Monument Library Meeting Room

[Register for a Session](#)

Net Control Officers:

Dec 30: Roger W3MIX
Jan 6: Need NCO
Jan 13: Need NCO
Jan 27: Need NCO

Volunteer today to be the NCO for an upcoming net! It's easy!

[Sign Me Up for NCO!](#)

[Read the Easy NCO Script](#)

King Sooper Fundraising!

Earn easy \$\$\$ for WØTLM!

Connect your King Soopers card to the [Community Rewards Program](#) and select our club as the nonprofit organization. The club will receive quarterly payments based on purchases. It costs you nothing and is a wonderful benefit for the club. Log into your account (tied to your King Soopers Card) or create an account if needed. Select *Community Rewards Program*, Type in *Tri-Lakes Monument Radio Association* (or use our account number, KM150). Press "Enroll" and you will receive a confirmation. It is that easy! Please sign up today to benefit WØTLM!



Tri-Lakes Monument Radio Association, WØTLM
 © 2025
 All rights reserved



Admin & Info

Local Education Events & Resources



Digital Library of Amateur Radio & Communications (DLARC)

For anyone who is not familiar with [DLARC](#)... you really should check it out:
Free Texts : Free Download, Borrow and Streaming : Internet Archive

DLARC is a library of materials and collections related to amateur radio and early communications. It is funded by a grant from Amateur Radio Digital Communications, a private foundation, to create a digital library that documents, preserves, and provides open access to the history of the amateur radio community.

This free resource combines archived digitized print materials, born-digital content, websites, oral histories, personal collections, and other related records and publications. The goals of DLARC are both to document the history of amateur radio and to provide freely available educational resources for researchers, students, and the general public. -- 73 Bill WTODX

WØTLM Radio Gear Loans

Portable Station: Icom IC-7300 HF+6m and Kenwood TM-V71A VHF/UHF transceiver. Both mounted in Gator case. Coax, end-fed antennas available for 20 meters & 40 meters. Optional large telescoping mast.
[Email WØSTU](#) for queries.



Other small items and tools available.
[Contact Chip KØCHP](#) for queries.

WØTLM Presentations

Our WØTLM website features a tremendous array of presentations on numerous subjects. If you find one that you need more info on just contact the Elmering crew: w0t1m-elmer@w0t1m.org

There are no stupid questions!

The WØTLM Elmer Team has the answers. Our volunteer Elmers will help you with anything ham radio related. If you have more than a question or two and would like to be paired with a friendly Elmer, please let us know and we'll connect you. Email us: w0t1m-elmer@w0t1m.org

Solar Activity

Solar Flare Alerts: Sign up for [Space Weather Alerts](#) and get instant text notifications when solar flares are underway. There are numerous sites and ways to check and see where and what the chances are of that great contact. One to check is [W5MMW solar site](#). Check it out. Also these sites provides solar data: [NØNBH](#) [SpaceWeather.com](#)

RM HAM University

Check out the offerings and sign up [here](#).

01/15/2025 **Designing Objects for 3D Printing**
Jim Dixon KA6ETE

02/15/2025 **Nerdfest**

03/15/2025 **Antenna Workshop**
Doug K2AD and Willem AC0KQ

04/26/2025 **Grounding and lightning protection**
Mike K7AIH

Visit the [RM Ham U website](#) for past presentations. They have an abundance of information shared amongst the ham community!

Upcoming Events & Hamfests

1/18/2025 Northern Colorado Amateur Radio Club (NCARC) Winter Hamfest, 8 am start time. Larimer Co. Fairgrounds.

1/25-26/2025 [Winter Field Day](#). TBD local details.

2/16/2025 [RMHAM Swapfest](#). 9am - 1pm. Brighton, CO.

4/5/2025 [LARCFEST](#). 8 am start time. Longmont, CO.

10/23-26/2025 [ARRL Rocky Mountain Division Convention](#). HamCon Colorado 2025. Grand Junction, CO.

Classified Ads

Member Gear for Sale



Advertise your used gear for sale here in a future Newsletter!

- **Provide one or more photos of the item (.jpg or .png preferred).**
- **Provide a complete description of the item.**
- **Include a characterization of the condition of the item.**
- **Include an asking price, indicate whether negotiable.**
- **Ads expire monthly and will not be repeated without a resubmission.**
- **Send ads to the Newsletter editor:**

Email Editor

LDG Electronics Tuner Z-100A <https://www.ldgelectronics.com/z-100-a>
Local Pickup in Woodmoor. \$125.00
Contact Hans KFØLAX pjgpost@gmail.com

